

Automatic Soap Dispenser

INSTRUCTION MANUAL

STK: #89184, #89185, #1853

SAFETY INSTRUCTIONS

Before using the automatic soap dispenser (here in after referred to as 'device'), the following basic precautions must always be taken:

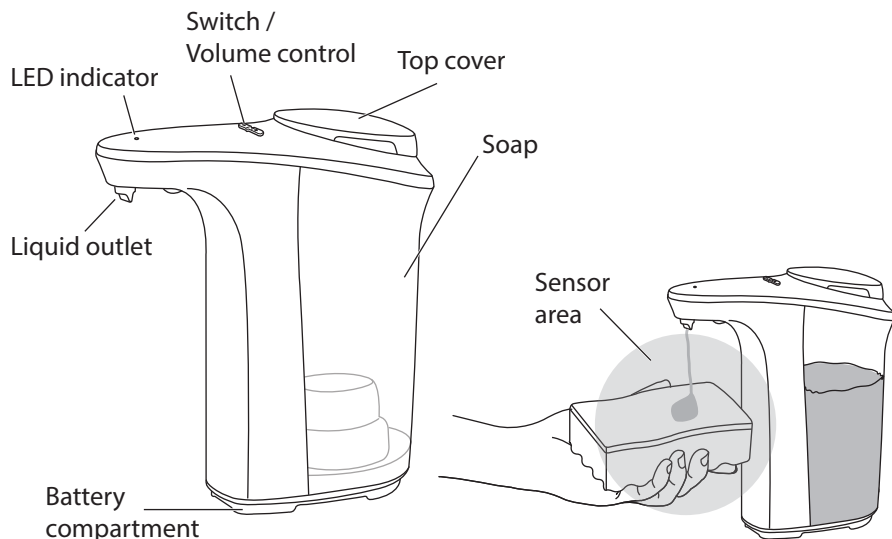
General Safety information and instructions

- Read the instructions for use carefully and keep them safe. If you give this device to other people, please also pass on this manual.
- Only use this device following the instructions in this user manual.
- The device is not a toy. Keep it out of the reach of children and pets.
- Do not leave packaging material lying around carelessly. This may become dangerous playing material for children.
- Do not place the device under any mechanical stress.
- Please handle the device carefully. Jolts, impacts or falls, even from a low height, can damage the device.
- Do not use or store the device in an environment subject to strong static electricity or magnetic fields.
- Do not expose the device to direct sunlight, heat sources, excessive humidity or corrosive environments.
- Never submerge the device in water or any kind of fluid.
- Do not use the device if it has fallen into water or any kind of fluid.
- Do not use the device if there are visible signs of damage.
- Do not use the device in the shower.
- Never fill the refill tank with flammable liquids or aggressive chemicals.
- Always switch OFF the appliance before changing batteries.

Batteries and heat

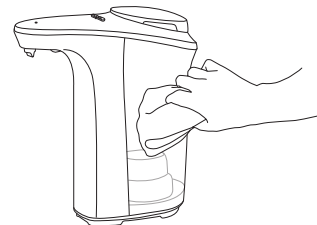
- Make sure the battery compartment is closed securely.
- Only use AA Alkaline batteries
- Only use a set of 4 of the same brand of AA Alkaline batteries and do not mix.
- Do not mix Alkaline, standard batteries (carbon-zinc) or rechargeable batteries (nickel hydride)
- Do not mix old and new batteries.
- Correctly insert (polarity) batteries into the battery compartment.
- Replace the full set of 4 AA Alkaline batteries at any one time.
- To prevent battery leakage, remove batteries from the appliance if it is not used for a long period of time.
- If batteries leak, do not allow battery fluid to come into contact with the skin or eyes. If contact has been made, wash the affected area with copious amounts of water and seek medical advice.
- Keep batteries out of the reach of children.
- Non-rechargeable AA batteries should not be recharged.
- Rechargeable AA batteries can be used in this device. Rechargeable batteries must be removed from the appliance before being charged.
- Only charge rechargeable batteries with the charger that comes with these batteries and follow the instructions in the manufacturer's manual.
- Rechargeable batteries should only be recharged under adult supervision.
- Do not short circuit the contacts inside the battery compartment or any batteries.
- Never damage rechargeable batteries. Damaging the casing of the device and/or piercing rechargeable batteries might lead to explosion or fire!
- Flat AA Alkaline batteries must be removed and disposed of in a safe and environment-friendly manner.
- Do not crush, puncture, dismantle or otherwise damage the batteries.
- Do not throw batteries into a fire because they may explode!
- Do not expose the device and batteries to excessive heat sources like fire or direct sunlight.
- Do not dispose of batteries in your household waste. To dispose of the batteries, take them to your local recycling station. Contact your local government offices for details.

INSTALLATION & OPERATION



Cleaning

- Use fresh new soap only, and clean the tank properly before each re-fill.
- Clean the exterior of the appliance with a damp cloth.

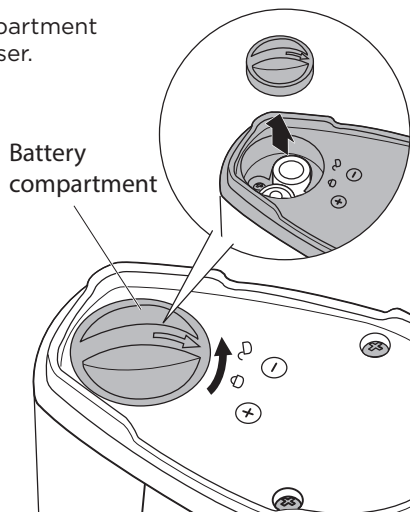


TECHINCAL DATA

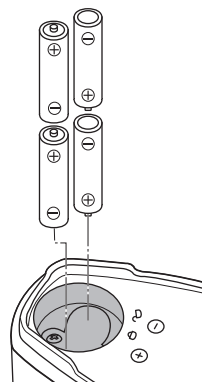
- Tank: refillable 480 ml
- Battery powered: 4x AA Alkaline batteries (not included)
- Dimensions: 85(W) x162(D) x188(H) mm
- Weight: 400 grams (w/o batteries)

Installation & placing the batteries

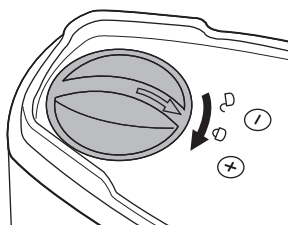
1. Open battery compartment on bottom of dispenser.



2. Correctly insert 4 AA Alkaline batteries, observing the polarities in the battery compartment. Rotate and lock the circular cap into place.



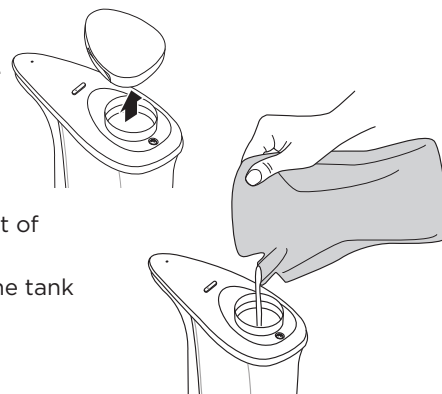
3. Rotate and lock the circular cap into place.



Fill the tank with soap

1. Put the battery into the battery compartment.
 - Do not pour liquid before loading the battery.

2. Opening the top cover.

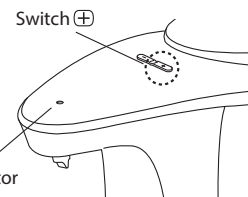


3. Pouring desired amount of liquid into the tank.

- Note: DO NOT overfill the tank (480ml Max.)

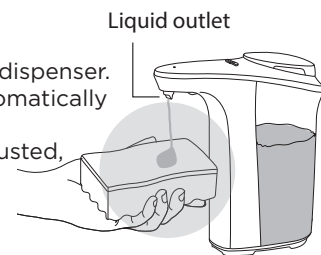
4. Switch the device ON by pressing and holding the ⊕ button for 2 seconds, the LED indicator will light up green.

- Note: When the battery level is low, the LED indicator will light up RED.



5. Liquid soap volume control

- There are 5 different levels on the dispenser.
- When installing the device, its automatically set at level 3.
- The dispensing volume can be adjusted, in sequence 1→2→3→4→5, by pushing the ⊕ or ⊖



- To switch OFF the device, press and hold the ⊖ button for 2 seconds, the LED indicator will light up red.

