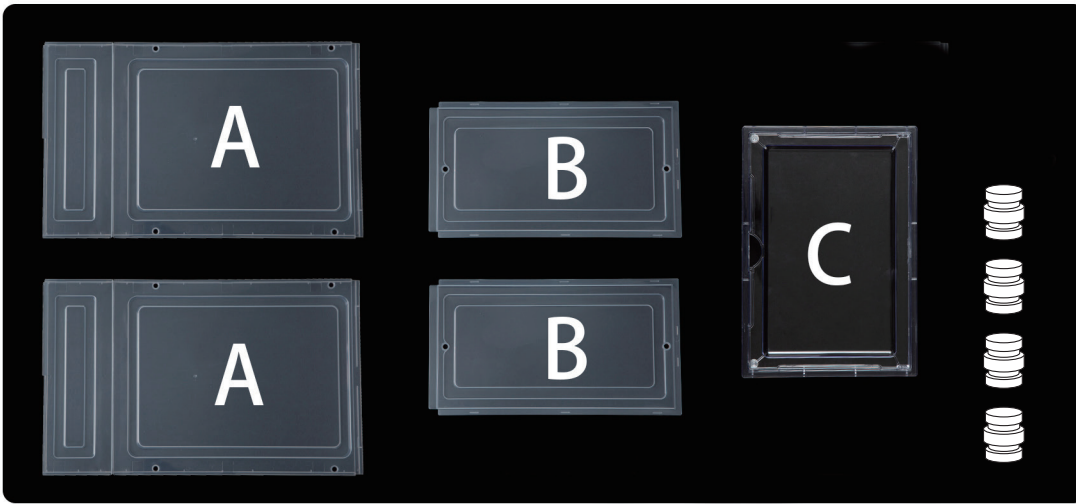


# Kicks Modular Shoe Storage Box

## Assembly Instructions

STK # 8436

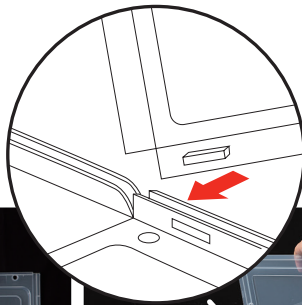


Bottom Panel  
Top Panel

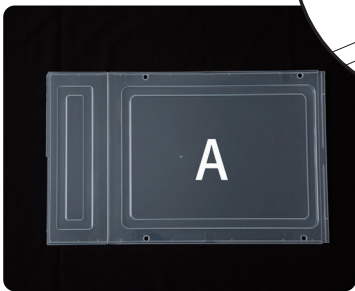
Side Panels

Door

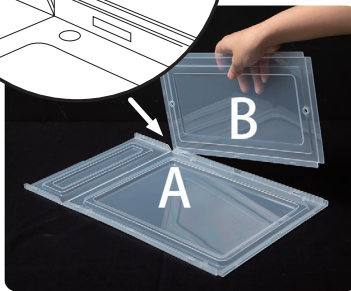
Pegs



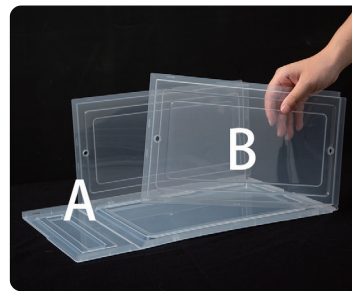
Make sure the locking tabs are facing inward.



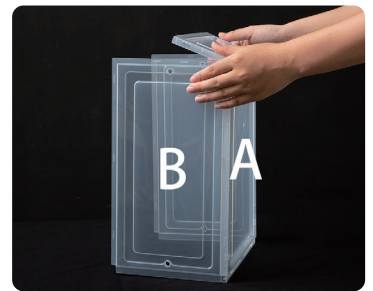
Lay the Bottom Panel (A) down.



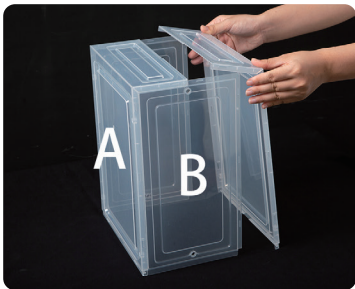
Attach Side Panel (B) to the bottom panel as pictured above.



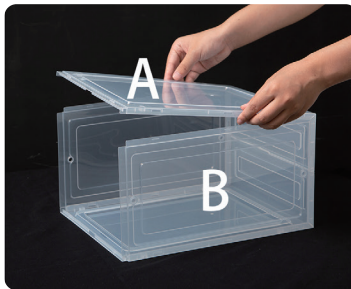
Attach the other Side Panel (B) to the Bottom Panel.



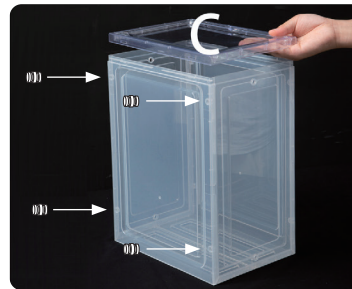
Fold the Bottom Panel part and attach to the Side Panels.



Fold the Top Panel (A) and attach to the top of the Side Panels



Attach Top Panel (A) to the Side Panels.



Carefully install the Door Panel (C) and insert pegs to the bottom holes on each corner of the box.



Your completed boxes should look like this.



**Tip:** If you have more than one Kicks Modular Shoe Storage Box you can stack them and use the pegs to lock them in place.